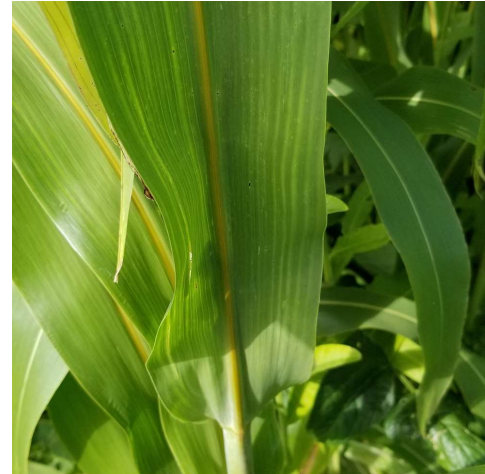


2606 BMR Forage Sorghum

Forage sorghum is typically the tallest and most leafy type of summer forage. Forage sorghum is the most "corn like", meaning that it has wider leaves, and is not able to produce much regrowth after cutting. Forage sorghum is ideally suited for single cut operations, such as silage. Due to its large stalk it is not suited for hay.

2606 is a BMR variety that can produce high tonnage and offers a 95-100 day maturity.



Seeding Method:	Plant or Drill on 15" rows
Seeding Rate:	6-9# / acre
Seeding Depth:	1" - 1.5"
Seeding Dates:	5/10 - 6/15
Notes:	Best for 20" or 30" rows, but can be drilled in 15" rows if no other option is available. Have nitrogen available to achieve optimal yield.