



Product Tech Sheet

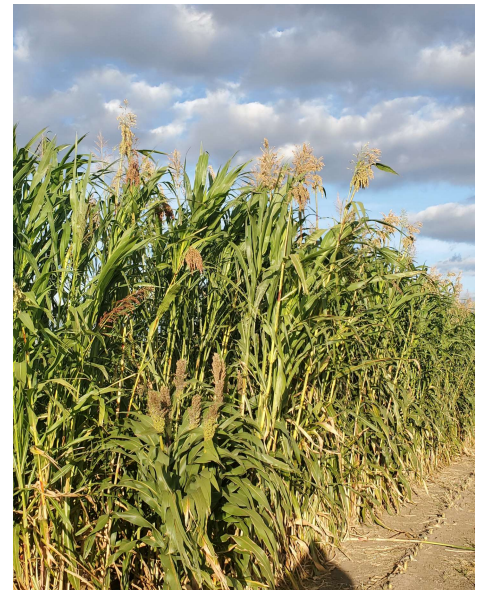
Buck'N Cover®

Buck'N Cover® is unlike any other mix on the market for plot screens! It not only achieves it's goal of being tall enough to hide behind, it is dense enough to provide a true feeling of obscurity. This mix has proven that when it is fertilized properly it can persist to late winter, helping to keep deer on your property for longer!

What's In It: There are several tall species such as Egyptian Wheat and Forage Sorghums in this mix. It also contains some species that stabilize the mid canopy and offer lower cover and screening such as sorghums and millets. Lastly, this mixture has sunn hemp which helps provide a dense lower canopy cover and stabilization, as well as nitrogen fixation.

Site Prep & Planting: To establish the best root system possible, Buck'N Cover® needs planted 1" deep. Having true 15", 20" or 30" rows helps create channels and is best. For best results, it needs to be at least 10 rows wide. Broadcasting this mix is not suggested.

Maintenance: Buck'N Cover® requires 100 pounds of actual nitrogen (equates to about 5 bags of a 32-0-8 fertilizer) to help it stand. Without adequate nitrogen this mix will not achieve its full potential height and is more likely to collapse early. This mix will winterkill. It should not be planted in the same area more than 2 consecutive years. Rotate away to other non-grass crops before re-utilizing.



Seeding Method: Plant or Drill

Seeding Rate: 15# / acre

Seeding Depth: 1"

Seeding Dates: 6/1 - 7/25

Notes: Available in 10# bags!



309.837.1820

www.midwestgrass.com